

# The jam was moving

from Debbie Harry "Kookoo" 1981

♩ = 127

Nile Rogers - Bernard Edwards

*Transcribed by Andreas Brink*

## Intro



## 10 Verse 1



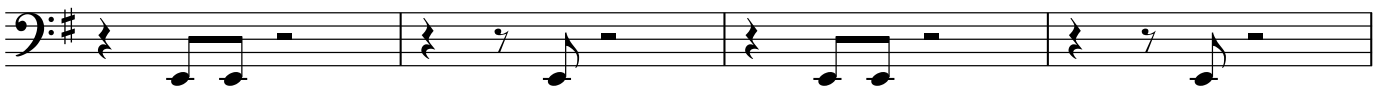
## 19 Chorus 1



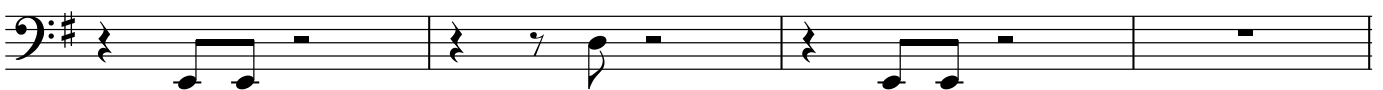
23



## 27 Verse 2



31



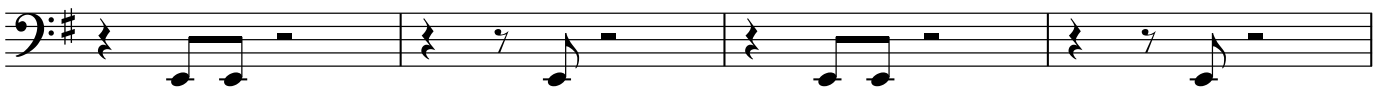
## 35 Chorus 2



39



## 43 Guitar solo



47



51 **Chorus 3**

Musical staff for Chorus 3, measures 51-54. The staff is in bass clef with a key signature of one sharp (F#). Measure 51: quarter rest, quarter note G2, quarter rest, quarter note G2. Measure 52: quarter rest, quarter note G2, quarter rest, quarter note G2. Measure 53: quarter rest, quarter note G2, quarter rest, quarter note G2. Measure 54: quarter note G2, quarter note G2, quarter note G2, quarter note G2.

55

Musical staff for Chorus 3, measures 55-58. The staff is in bass clef with a key signature of one sharp (F#). Measure 55: quarter rest, quarter note G2, quarter rest, quarter note G2. Measure 56: quarter rest, quarter note G2, quarter rest, quarter note G2. Measure 57: quarter rest, quarter note G2, quarter rest, quarter note G2. Measure 58: quarter note G2, quarter note G2, quarter note G2, quarter note G2.

59 **Verse 3**

Musical staff for Verse 3, measures 59-62. The staff is in bass clef with a key signature of one sharp (F#). Measure 59: quarter rest, quarter note G2, quarter note G2, quarter rest. Measure 60: quarter rest, quarter note G2, quarter note G2, quarter rest. Measure 61: quarter rest, quarter note G2, quarter note G2, quarter rest. Measure 62: quarter rest, quarter note G2, quarter note G2, quarter rest.

63

Musical staff for Verse 3, measures 63-66. The staff is in bass clef with a key signature of one sharp (F#). Measure 63: quarter rest, quarter note G2, quarter note G2, quarter rest. Measure 64: quarter rest, quarter note G2, quarter note G2, quarter rest. Measure 65: quarter rest, quarter note G2, quarter note G2, quarter rest. Measure 66: quarter rest, quarter note G2, quarter note G2, quarter rest.

67 **Chorus 4**

Musical staff for Chorus 4, measures 67-70. The staff is in bass clef with a key signature of one sharp (F#). Measure 67: repeat sign, quarter rest, quarter note G2, quarter rest, quarter note G2. Measure 68: quarter rest, quarter note G2, quarter rest, quarter note G2. Measure 69: quarter rest, quarter note G2, quarter rest, quarter note G2. Measure 70: quarter note G2, quarter note G2, quarter note G2, quarter note G2.

71

Musical staff for Chorus 4, measures 71-74. The staff is in bass clef with a key signature of one sharp (F#). Measure 71: quarter rest, quarter note G2, quarter rest, quarter note G2. Measure 72: quarter rest, quarter note G2, quarter rest, quarter note G2. Measure 73: quarter rest, quarter note G2, quarter rest, quarter note G2. Measure 74: quarter note G2, quarter note G2, quarter note G2, quarter note G2.

3 x's